

Cross-walking HEP Data



Class 1

- Human land use
- Aquatic
- Sparse and barren systems
- Forest and woodland systems
- Shrubland, steppe and savanna systems
- Grassland systems
- Recently disturbed or modified
- Riparian and wetland systems

National Land Cover Data

Class 2



National Land Cover Data

Class 3 = Ecological system



National Land Cover Data



Class

Subclass

Formation

Division

Macro-group

Group

Alliance

Association

National Vegetation Classification

Class

Subclass

Formation

Division

Macro-group

Group

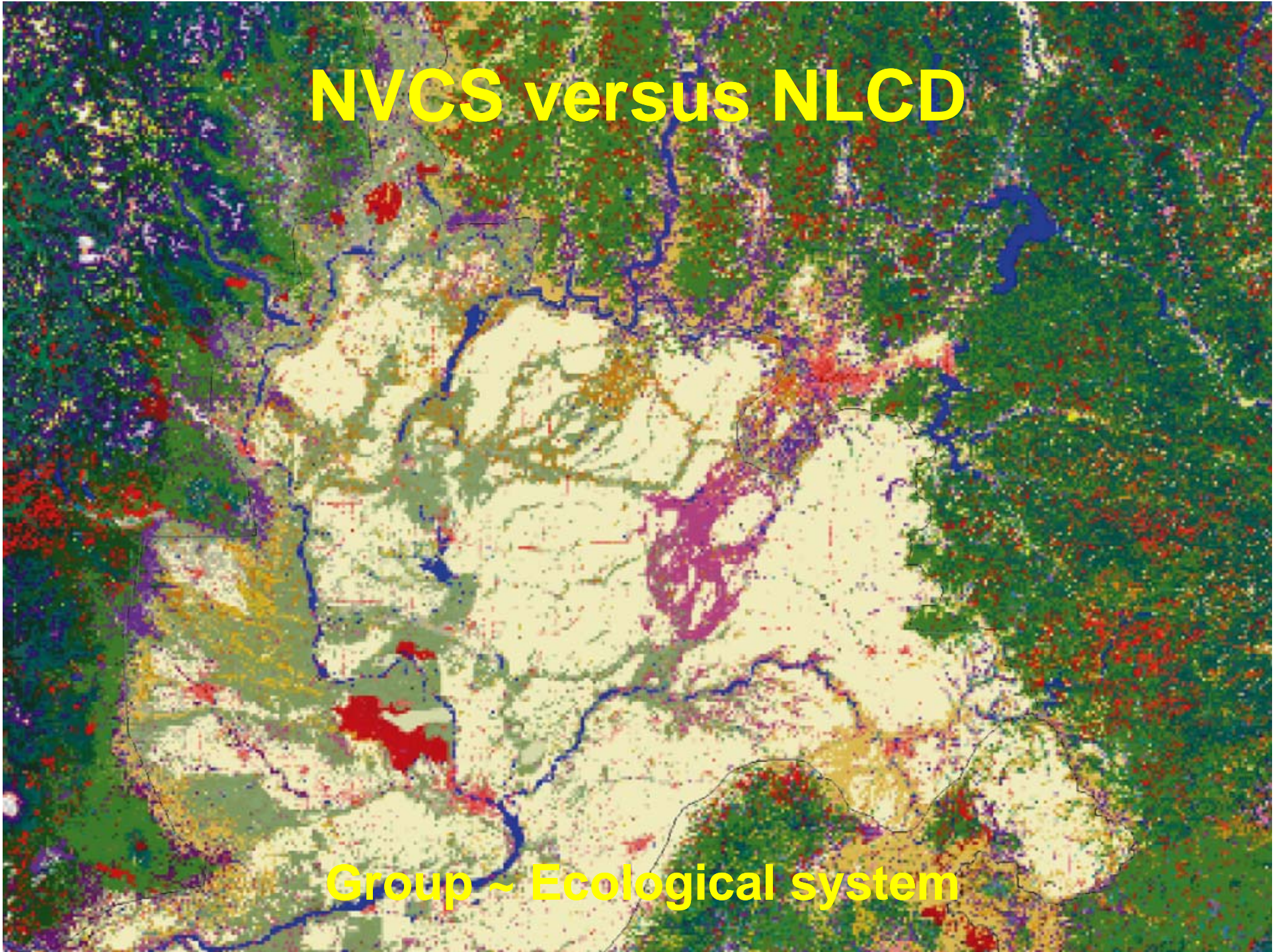
Alliance

Association

National Vegetation Classification

NVCS versus NLCD

Group ~ Ecological system



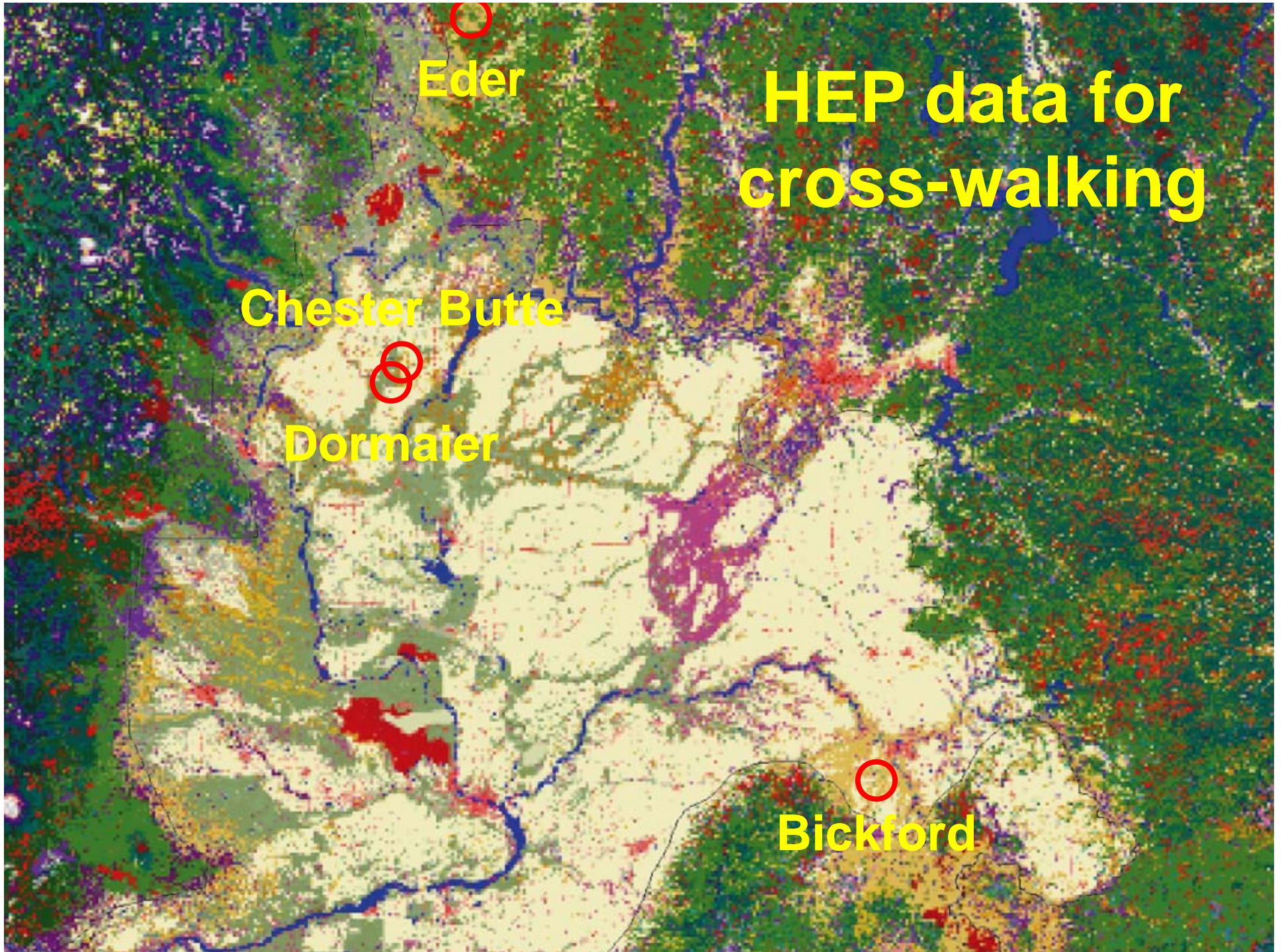
HEP data for cross-walking

Eder

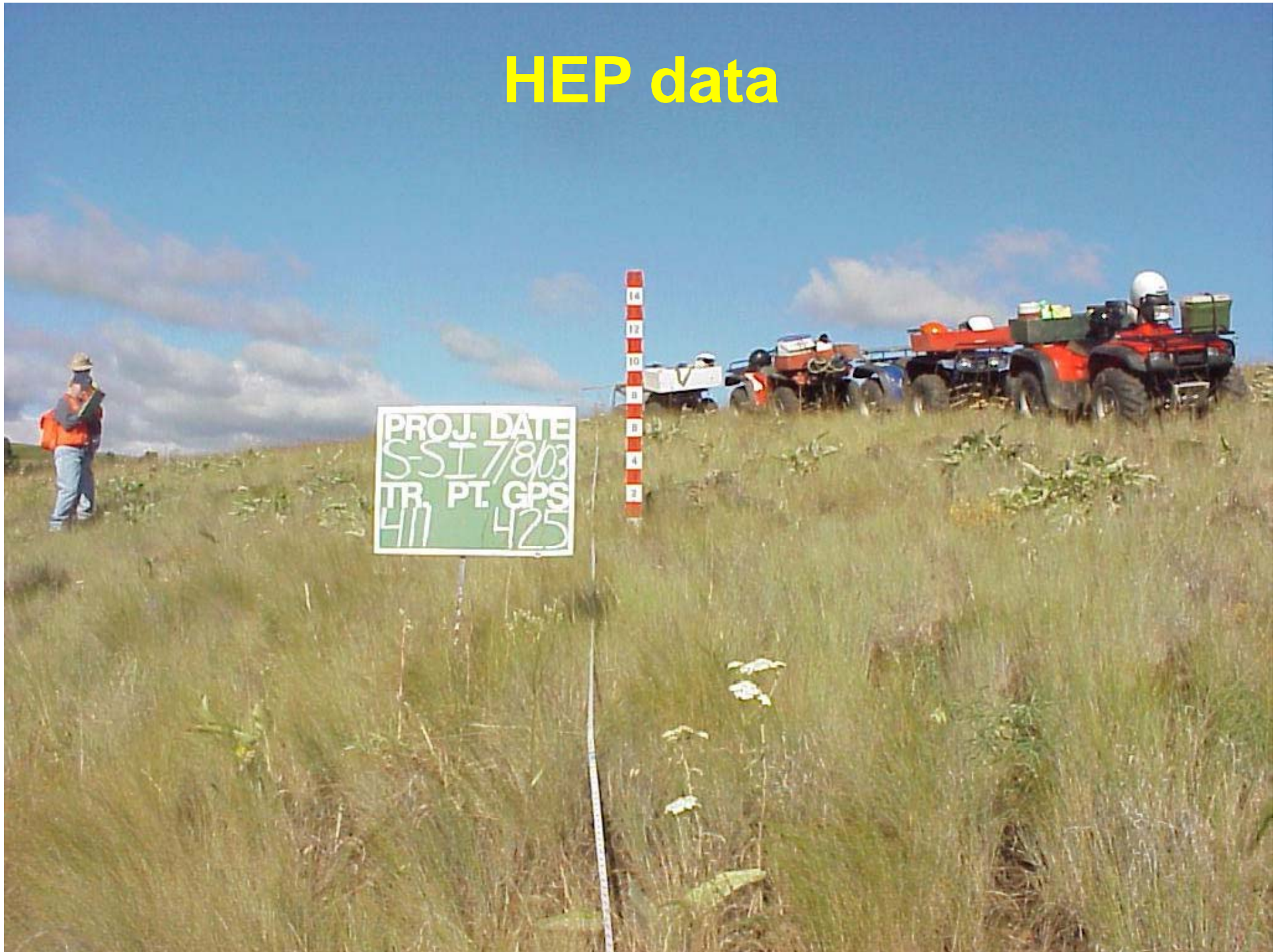
Chester Butte

Dormaier

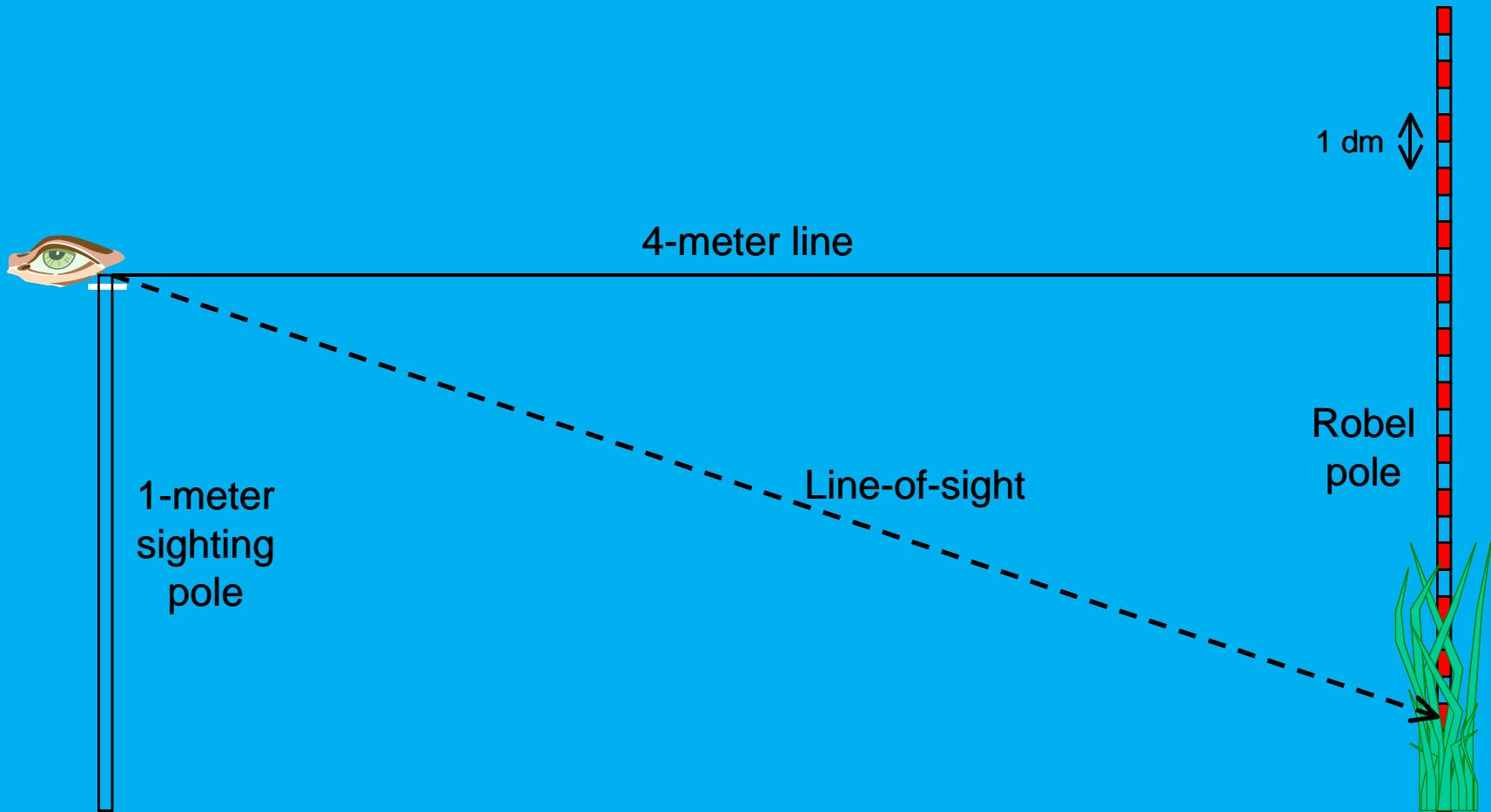
Bickford



HEP data



HEP data



Field Guide to Washington's Ecological Systems

DRAFT - February 7, 2008



Field Guide to Washington's Ecological Systems

DRAFT - March 5, 2008

Compiled by Joe Rocchio and Rex Crawford
Washington Natural Heritage Program
Asset Management & Protection Division
Washington Department of Natural Resources
1111 Washington St. SE
Olympia, WA 98504-7014

Cover Photos: from Johnson and O'Neil (2001)

ii

DRAFT SUBJECT TO CHANGE

Compiled by Joe Rocchio & Rex Crawford 10/28/2009

Key to ecological systems

Location and elevation

% woody cover

Dominant species of trees/shrubs

% shrubby cover

Shrub height

Dominant species of shrubs

% herbaceous cover

Cross-walking of HEP data

Shrubsteppe

Grassland

Shrubland

Rockland

Conifer forest

Riparian forest

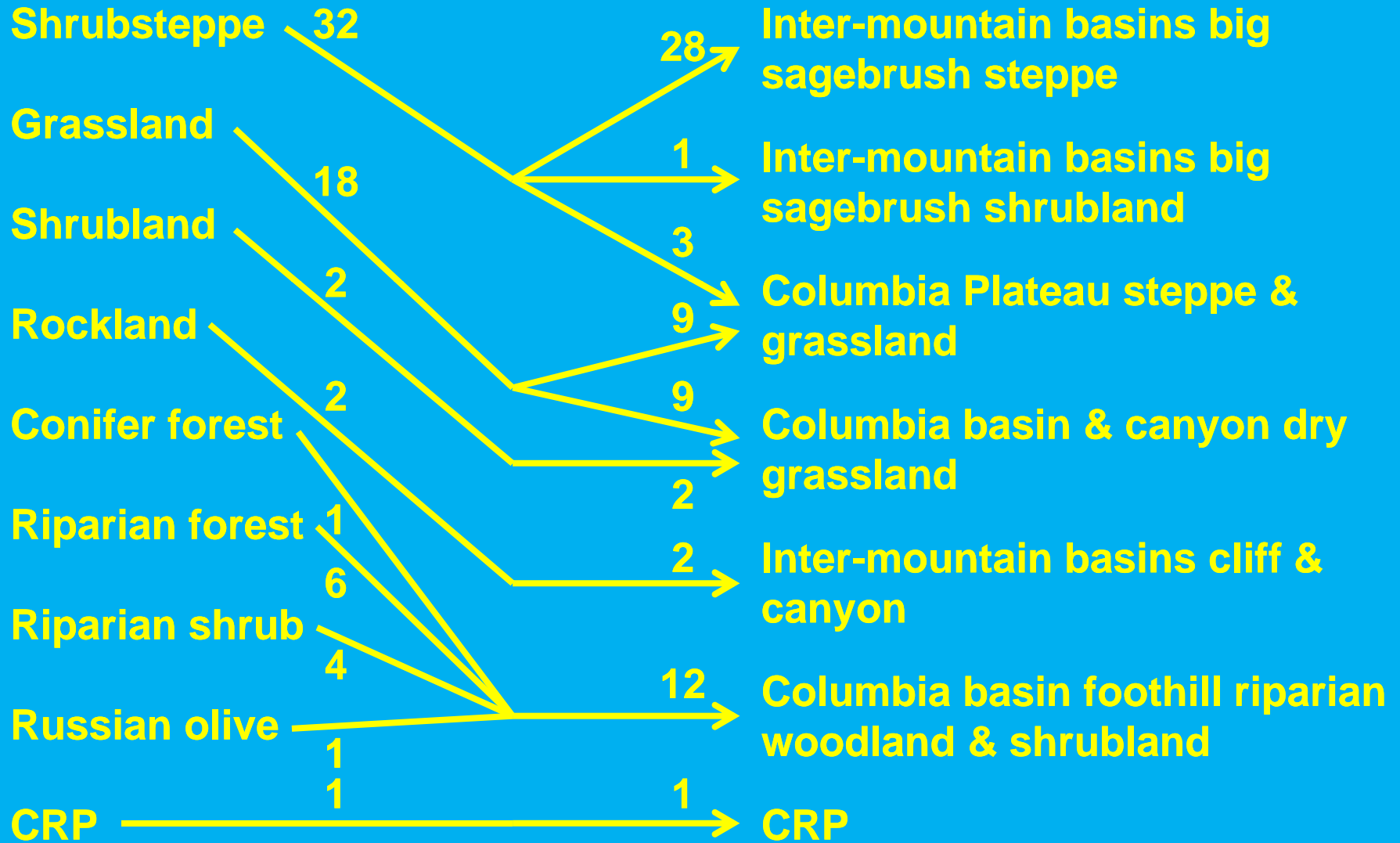
Riparian shrub

Russian olive

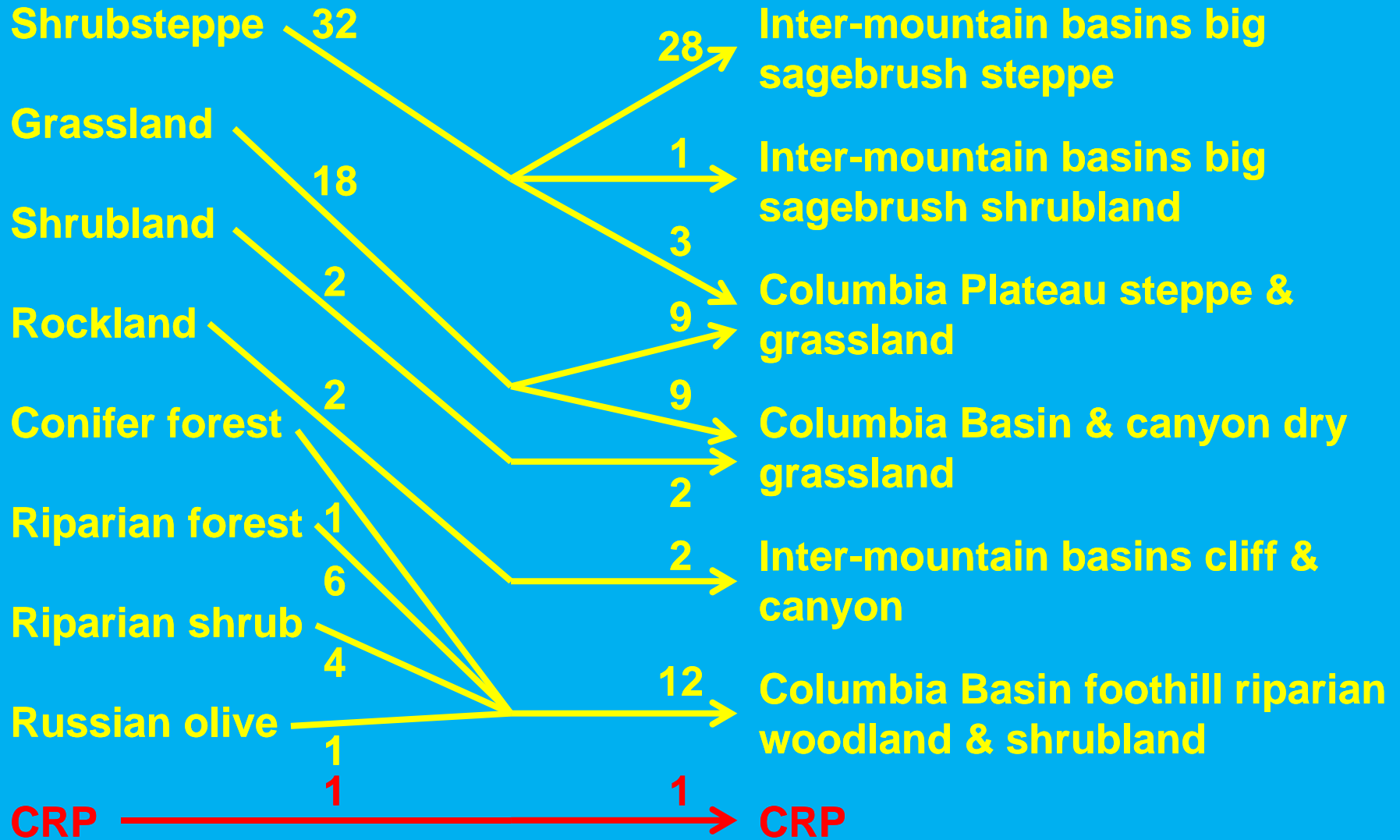
CRP

→ **67 transects**

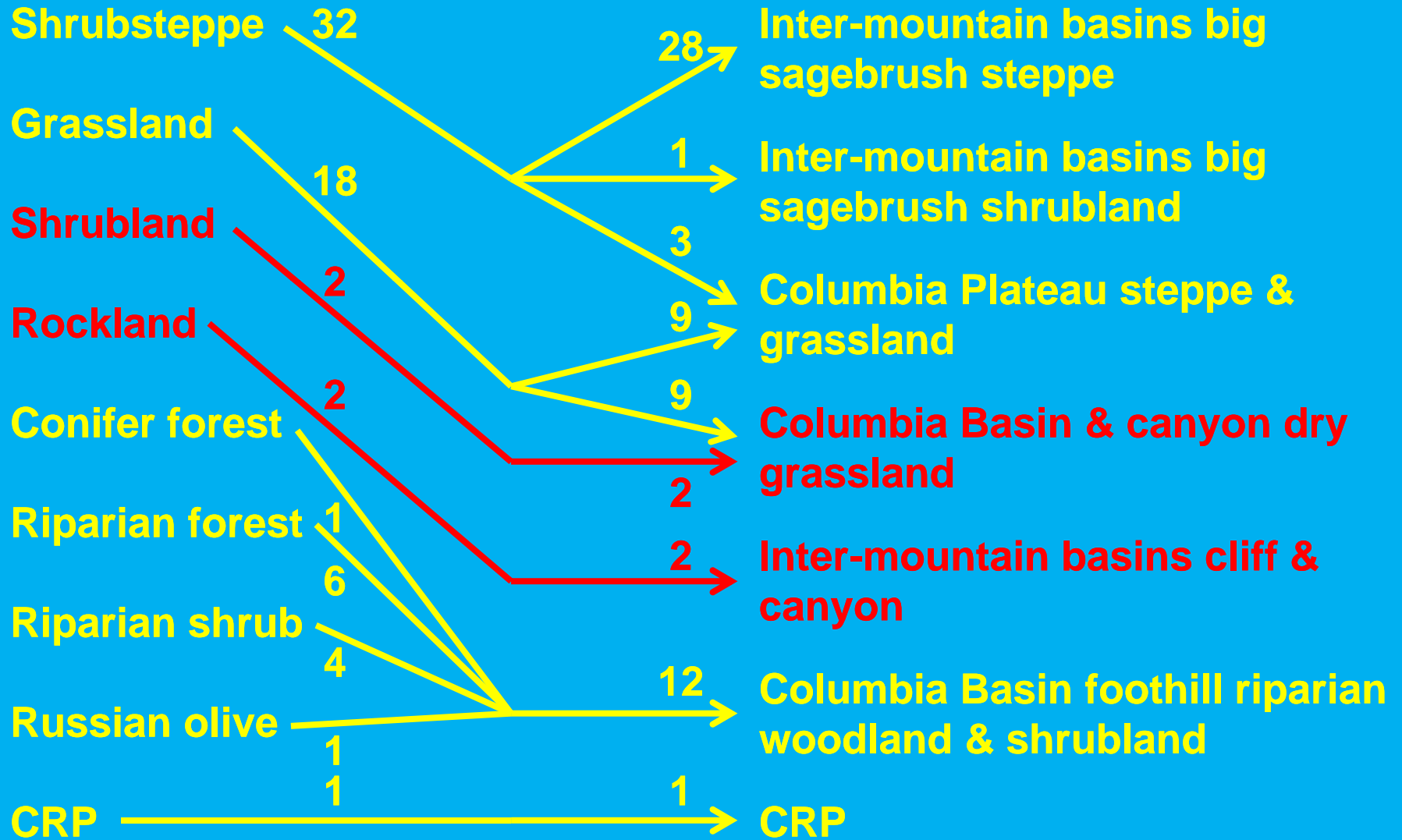
Cross-walking of HEP data



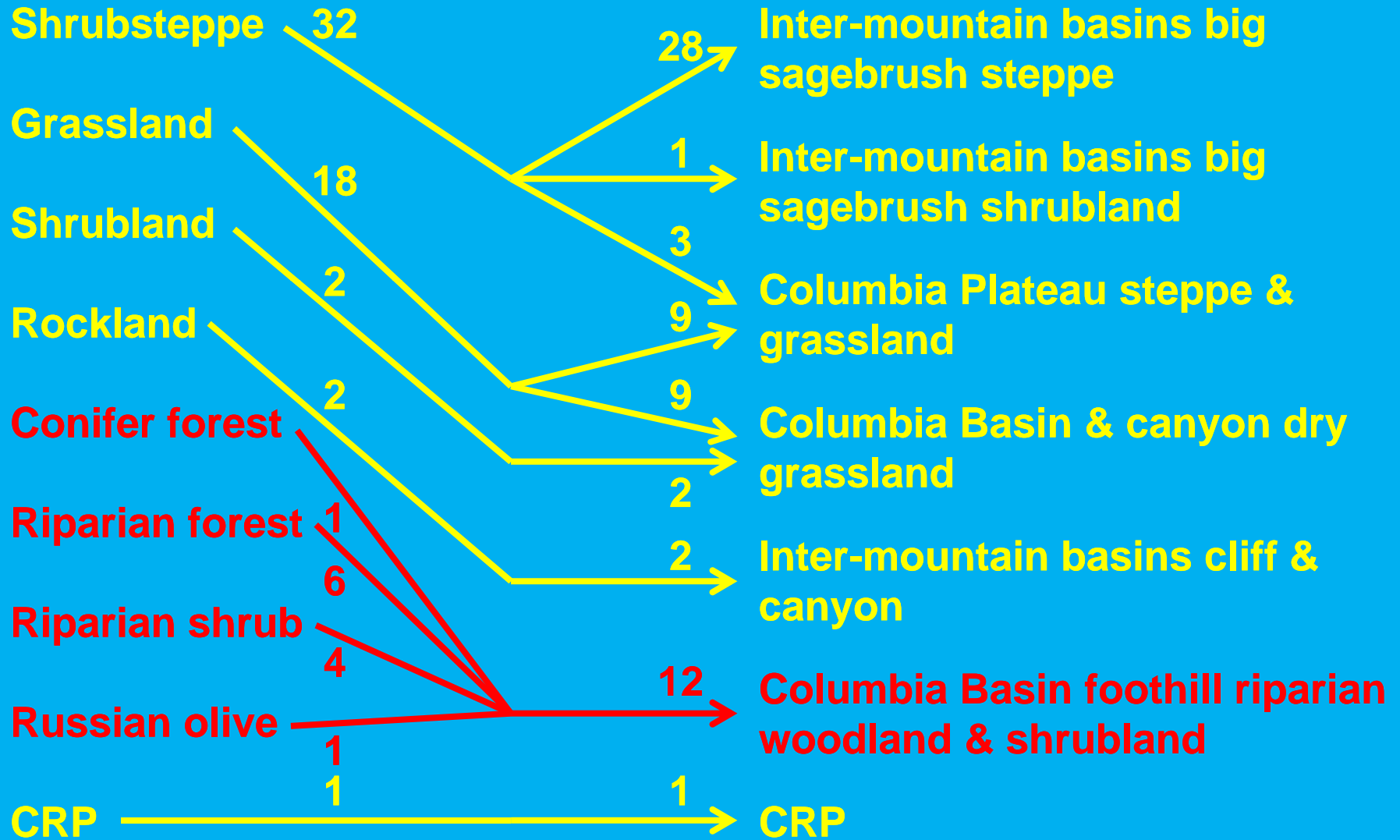
Cross-walking of HEP data



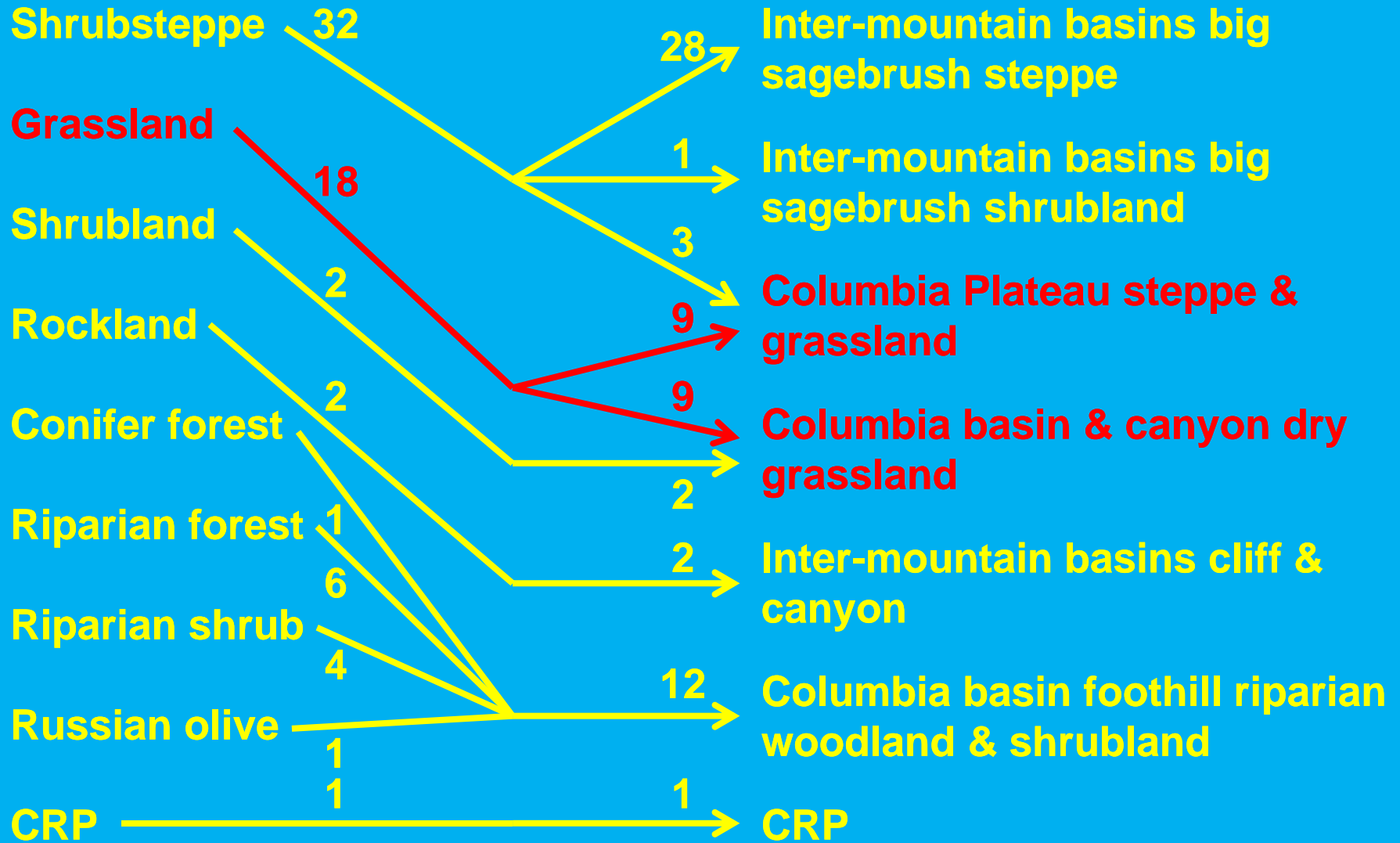
Cross-walking of HEP data



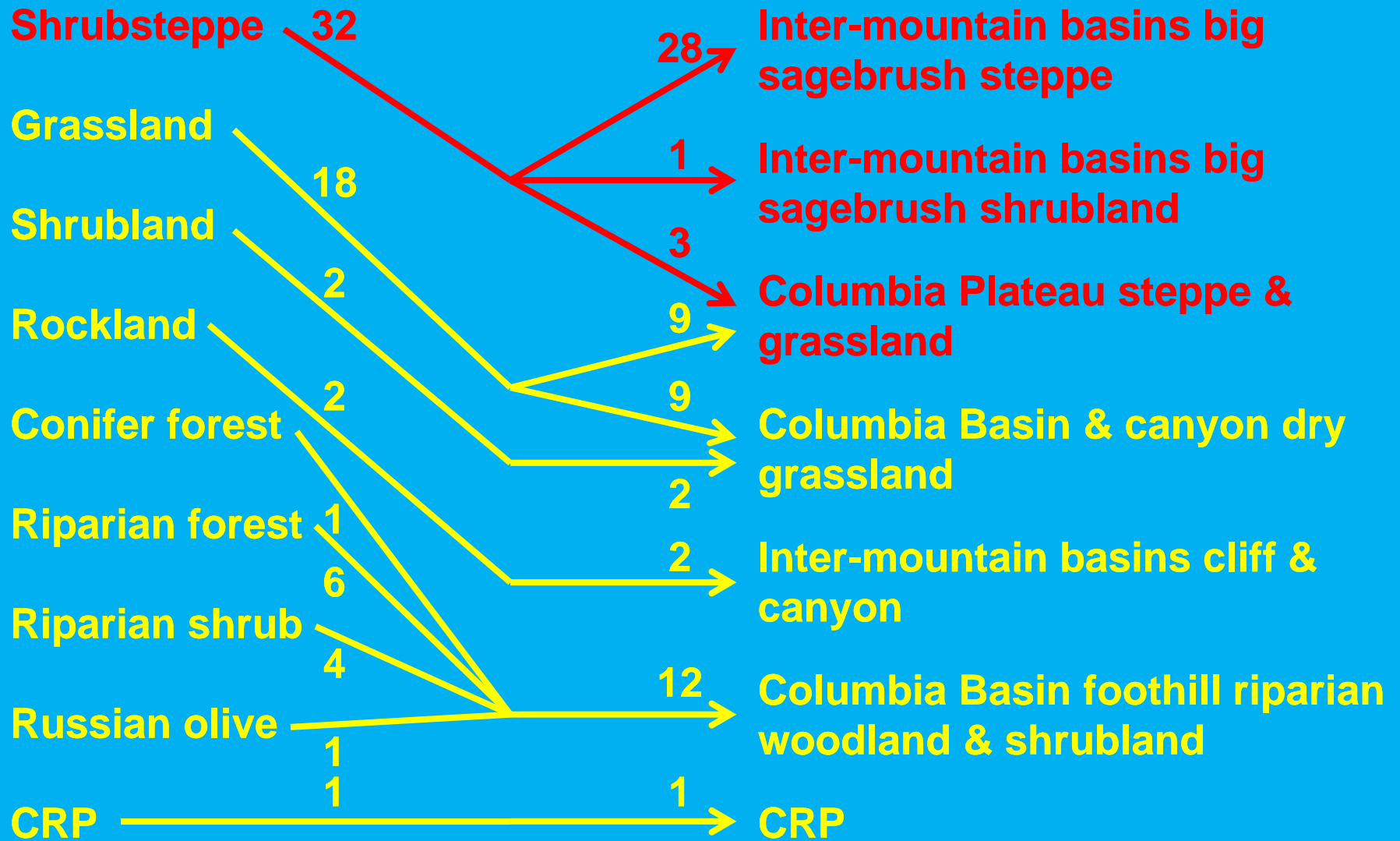
Cross-walking of HEP data



Cross-walking of HEP data



Cross-walking of HEP data



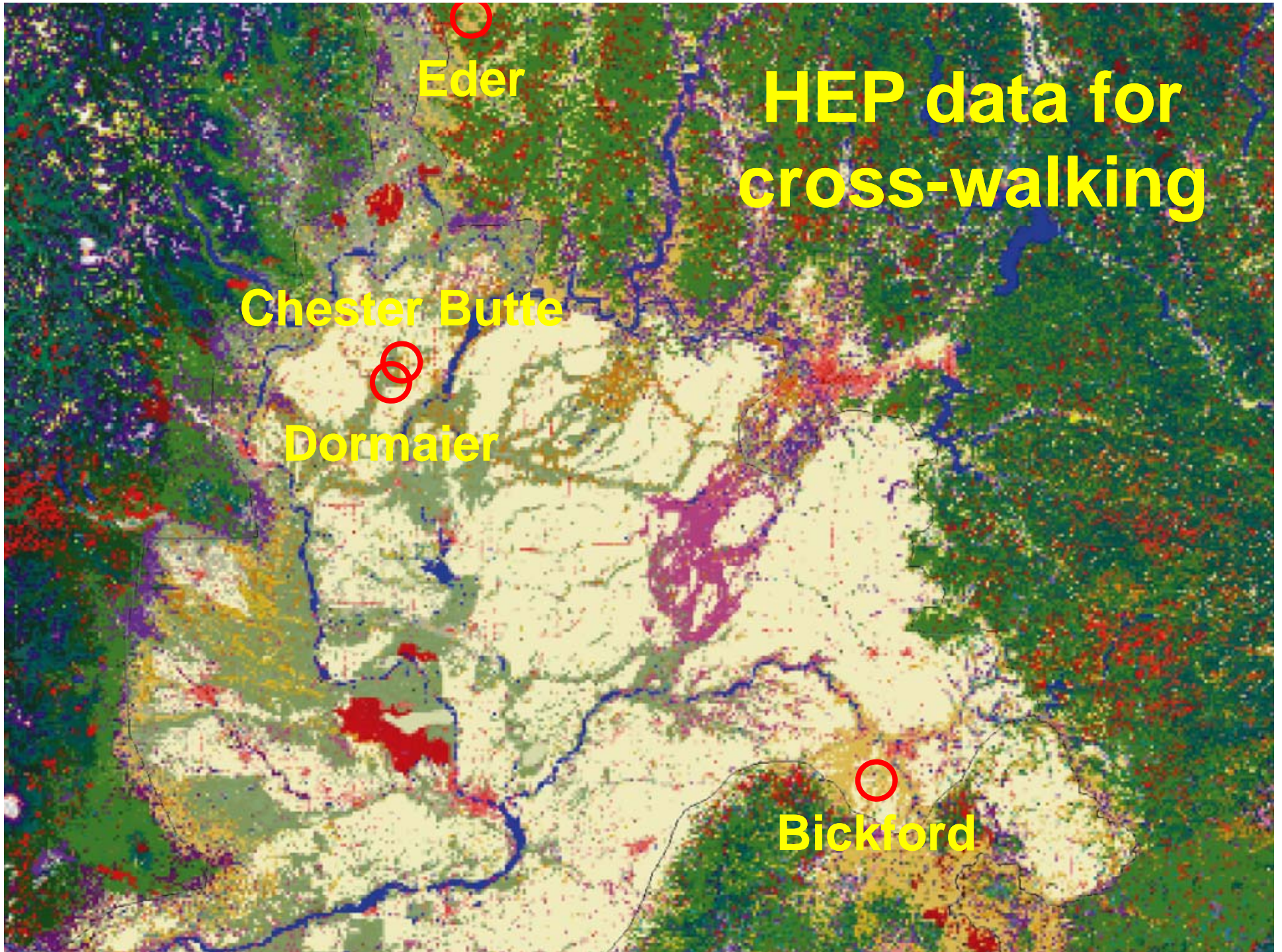
HEP data for cross-walking

Eder

Chester Butte

Dormaier

Bickford



Comparison with Imagery

Group/ecological system (64% correct)



Macro-group (78% correct)



Division (82% correct)



Formation (82% correct)



Subclass (84% correct)



Class (84% correct)

Comparison with Imagery

Group/ecological system (64% correct)

↓ - 9

Macro-group (78% correct)

↓ - 3

Division (82% correct)

↓

Formation (82% correct)

↓ - 1

Subclass (84% correct)

↓

Class (84% correct)

- 11

Explanations for inaccuracies

Group – Presence/absence of sagebrush

Macro-group – Complex habitats

Division

Formation – Agriculture vs. CRP

Subclass

Class – Difficult habitats (rock, riparian, crops)

Conclusion

